

# Homestead Series

New England Colonials  
1,536 sq. ft. - 1,706 sq. ft.



**Bristol - 1,680 SF**

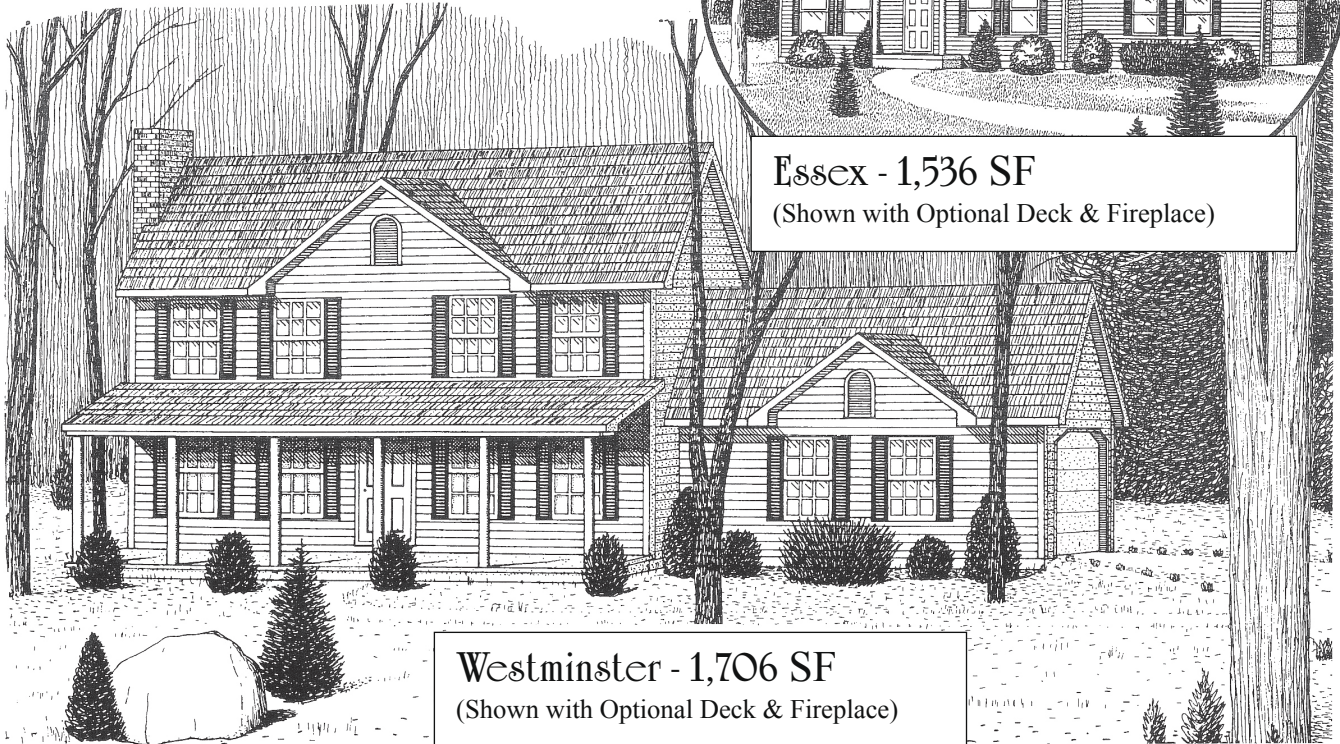
(Shown with Optional Deck & Fireplace)

Our traditional Affordable New England Colonials combine simplicity with comfortable living. The Essex and Westminster plans feature an open center door colonial design that is easy to build. Our inset layout shows how flexible these designs are by easily adding a first floor Family Room and Kitchen Breakfast Nook to the plan.



**Essex - 1,536 SF**

(Shown with Optional Deck & Fireplace)



**Westminster - 1,706 SF**

(Shown with Optional Deck & Fireplace)



**Ed Nikles**  
**Custom Builder, Inc.**

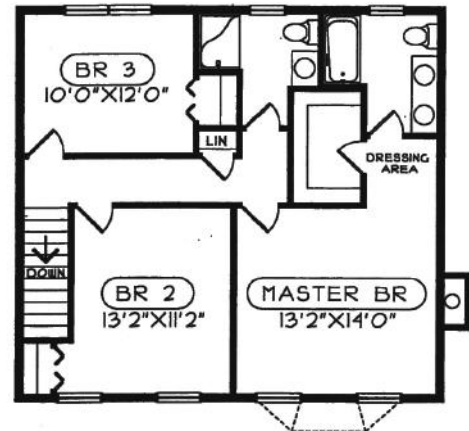
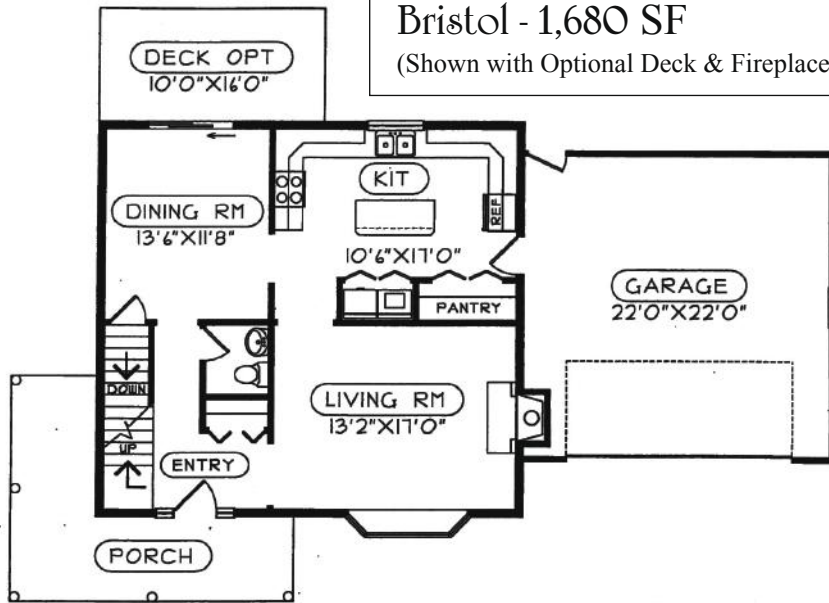
104 BENNETT AVENUE • SUITE 1A • Milford, PA 18337  
OFFICE LOCATION: ROUTE 6/209 AT BENNETT AVENUE  
(570) 296-9200 • [www.ednikles.com](http://www.ednikles.com)

The Bristol, with its wrap-around porch, front bay window, large Kitchen with eat-in island, and Master Bedroom Suite with walk-in closet and Dressing area packs a tremendous array of great features into a simple 1,680 square foot, two-story design. This popular series offers basic two-story homes with modern, efficient plans and a touch of rugged New England style.



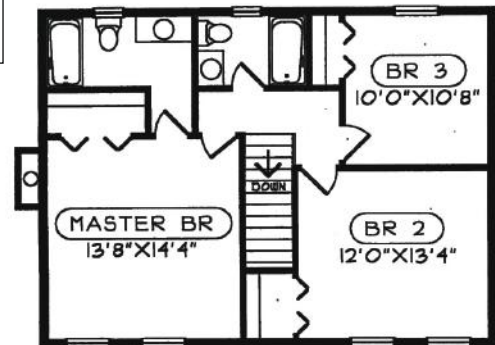
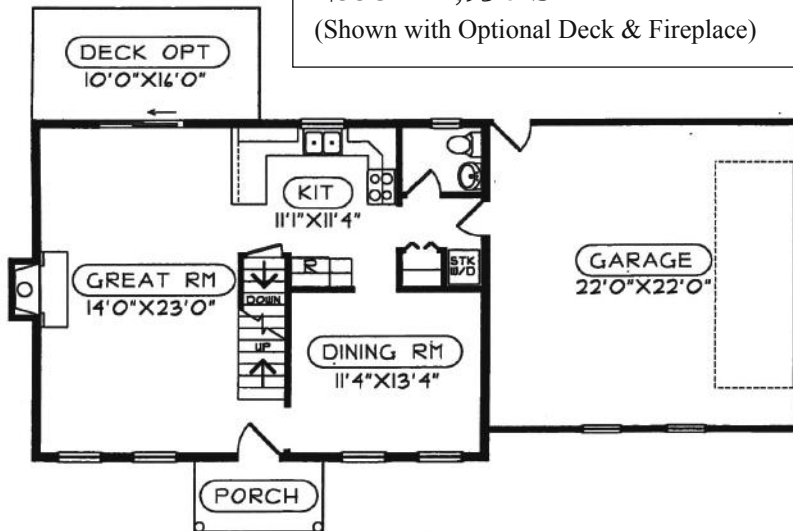
### Bristol - 1,680 SF

(Shown with Optional Deck & Fireplace)



### Essex - 1,536 SF

(Shown with Optional Deck & Fireplace)



### Westminster - 1,706 SF

(Shown with Optional Deck & Fireplace)

