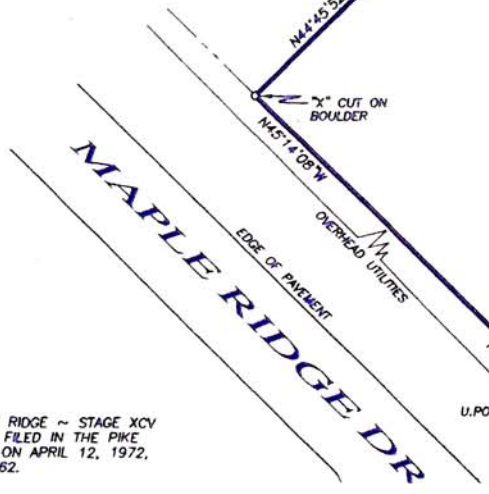


LOT 33
LANDS NOW OR FORMERLY LUTY
DEED BOOK 1972 PAGE 244A

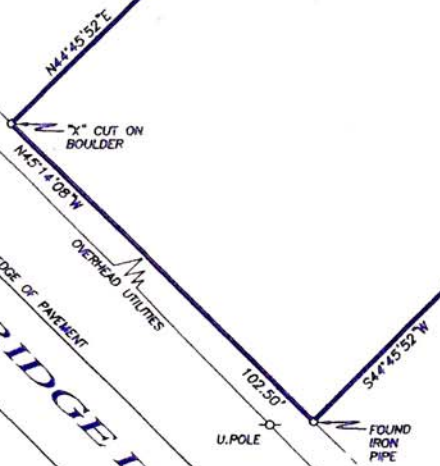
LOT 31 - BLOCK XII - STAGE XCV
LANDS NOW OR FORMERLY SLUCKA
DEED BOOK 181 PAGE 264

LOT 32
BLOCK XII - STAGE XCV
CONTAINS 0.49 ACRE ±
VACANT
RECORD BOOK 1286 PAGE 61

LOT 31
LANDS NOW OR FORMERLY IPPOLITO
RECORD BOOK 1927 PAGE 975



REFERENCE MAP:
"SUBDIVISION PLAT OF MAPLE RIDGE ~ STAGE XCV
HEMLOCK FARM COMMUNITY", FILED IN THE PIKE
COUNTY RECORDER'S OFFICE ON APRIL 12, 1972,
IN PLAT BOOK 9, AT PAGE 162.



Ed Nikles
Custom Builder, Inc.
Nikles Realty
Inc.

104 Bennett Ave., Suite 1A, Milford, PA 18337
Tel: 570-296-9200 • www.ednikles.com

Hemlock Farms
Lot 32 Block 12 Stage 95
Pike County, PA