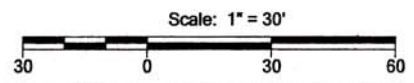
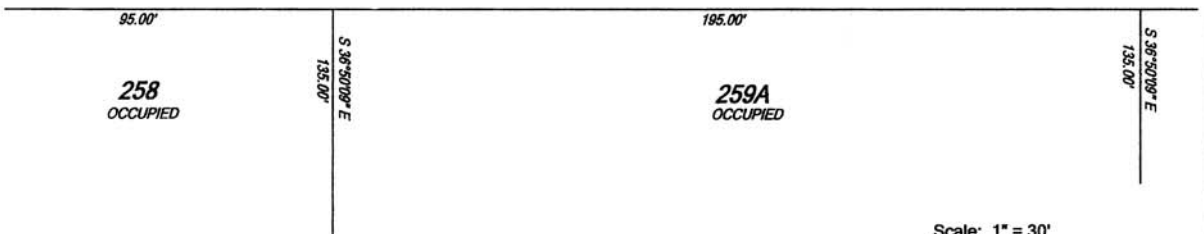


NOTE: CENTRAL WATER AVAILABLE IN DEVELOPMENT

SQUIRREL ROAD 50' R/W



Prepared by:
P.R. Addio, Inc.



**Ed Nikles
Custom Builder, Inc.**
**Nikles Realty
Inc.**

104 Bennett Ave., Suite 1A, Milford, PA 18337
Tel: 570-296-9200 • www.ednikles.com

Setbacks required:
- Front: 40.0'
- Sides: 12.5'
- Rear: 12.5'

Notes:
* Lot Subject To All
Easements and/or Right of
Ways
* F.I.R.M.: Zoned 'X'

Land Of:

Pocono Mt. Lake Forest
Lot: 250 Section: 2
Delaware Township
Pike County, PA
6 June 2006



Pasquale R. Addio, L.S. 26108-E PA
502 W. Hartsell Street, Milford, PA 18337
(570) 296-5030

Svy. & Dwg.: S.R. Bognatz, P.E.	Drawing # 06-164
Ck. & Appr.: P.R. Addio, L.S.	Surveyed: 8 June 2006
DB 730 / 247	FB #93 / 80