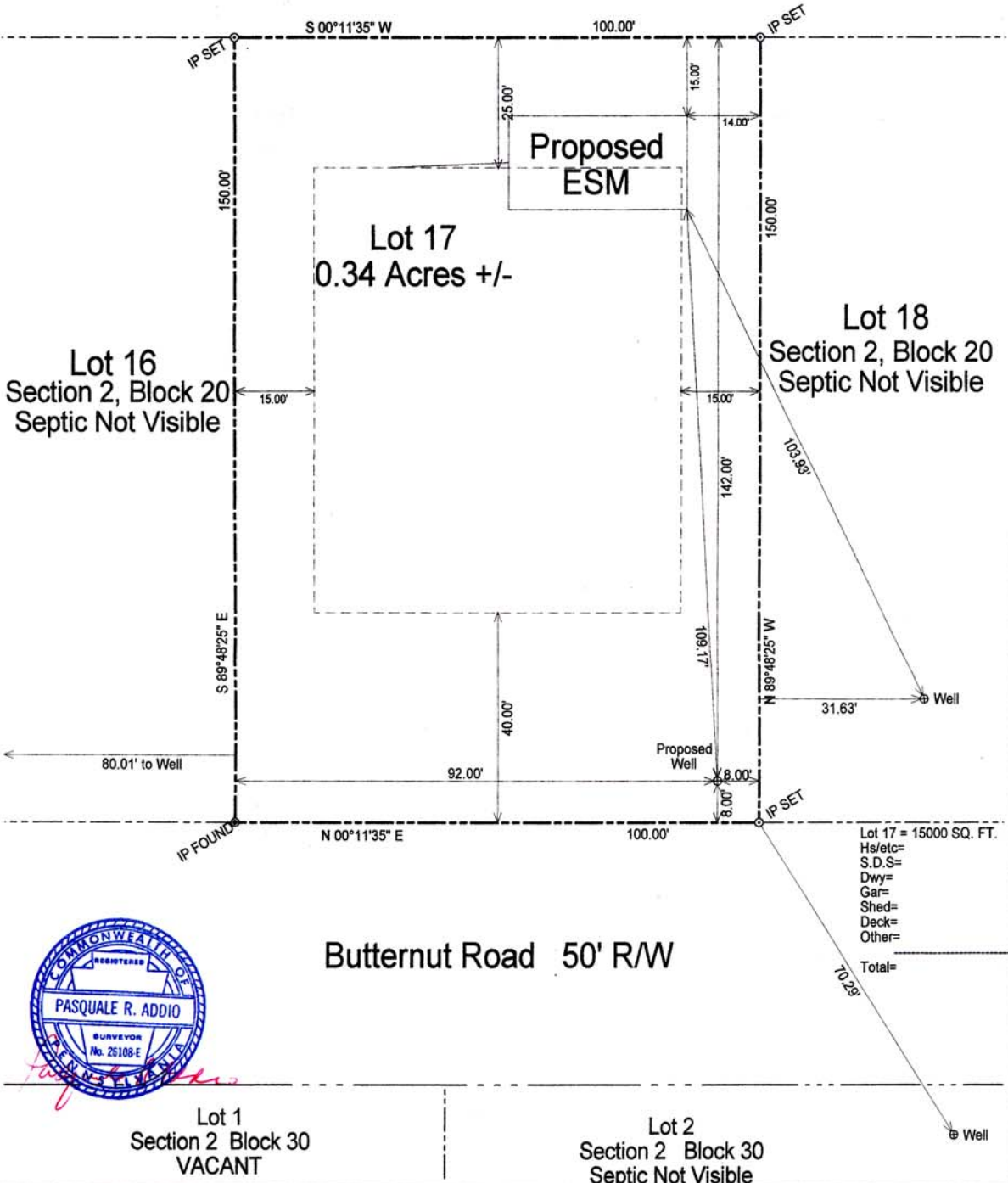


No Well and Septics Visible



Butternut Road 50' R/W

Prepared by:

P.R. Addio, Inc

Pasquale R. Addio, L.S. 26108-E PA



Surveyed and Certified To:

**Ed Nikles**  
*Custom Builder, Inc.*  
**Nikles Realty**  
*Inc.*

104 Bennett Ave., Suite 1A, Milford, PA 18337  
Tel: 570-296-9200 • www.ednikles.com

Land Of:

Gold Key Lakes  
Lot 17, Section 2, Block 20  
Dingman Township  
Pike County, PA  
June 29, 2006

Setbacks required:  
Front: 40'  
Sides: 15'  
Rear: 25'

Notes:  
Lot 17 subject to all easements and/or right of ways  
F.I.R.M Zone X

Date Surveyed: June, 2006

Dwg by: MCC

Scale: 1"=20'

CK by: P.R. Addio, L.S.

Dwg # 06-168 FB: 102 Pg: 22